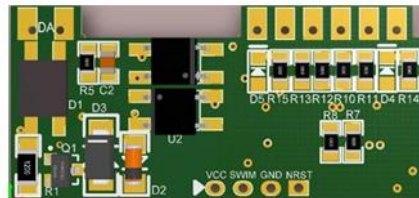
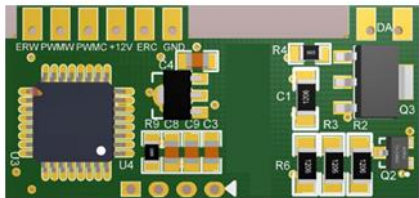
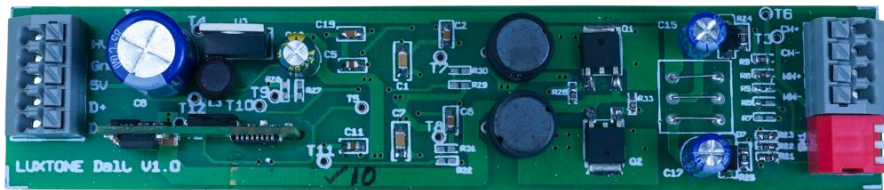
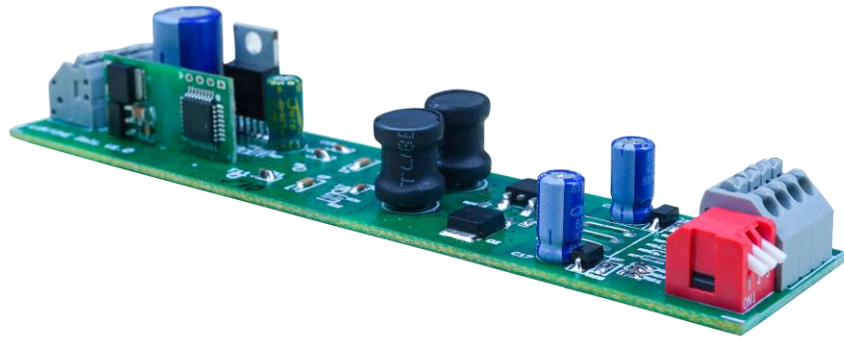


# DALI LED Driver EVAL + Development Board



- DC-DC Board
- IEC 62386 Part No. 102, 207 and 209 compliant firmware
- DT6 and DT8(Tc)
- Input:  $V_{IN} > V_{OUT}$
- Output:  $V_{OUT}$  Range 6-42VDC (LED Load)
- Dimming range 0.1%-100%
- Output Current Max. 1A, Current variation < 2%
- Current DIP Switch 3 Pole 8 Currents(275-1000mA)
- DALI Bus input
- ProbitLab2 tested
- Ready for DALI 2 test sequence software
- Suitable for OEMs who wish to get into production of DALI LED drivers leading to DALI alliance membership

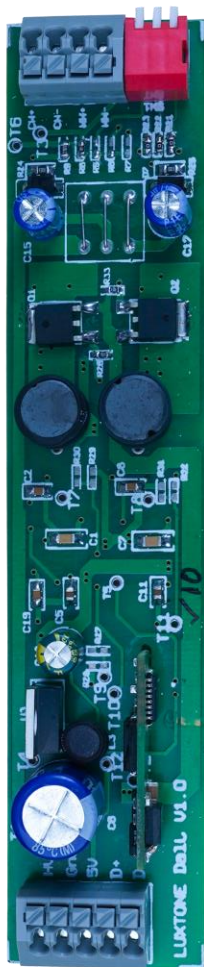
DALI®, DALI-2®, and the DALI logo are registered trademarks of the DALI Alliance (Digital Illumination Interface Alliance). This presentation and the products shown herein are not affiliated with, endorsed by, or certified by the DALI Alliance unless explicitly stated. All references to DALI or DALI-2 are for descriptive purposes only to indicate compatibility or interoperability with the DALI standard.

info@luxtone-global.com



+91 99673 67774

luxtone



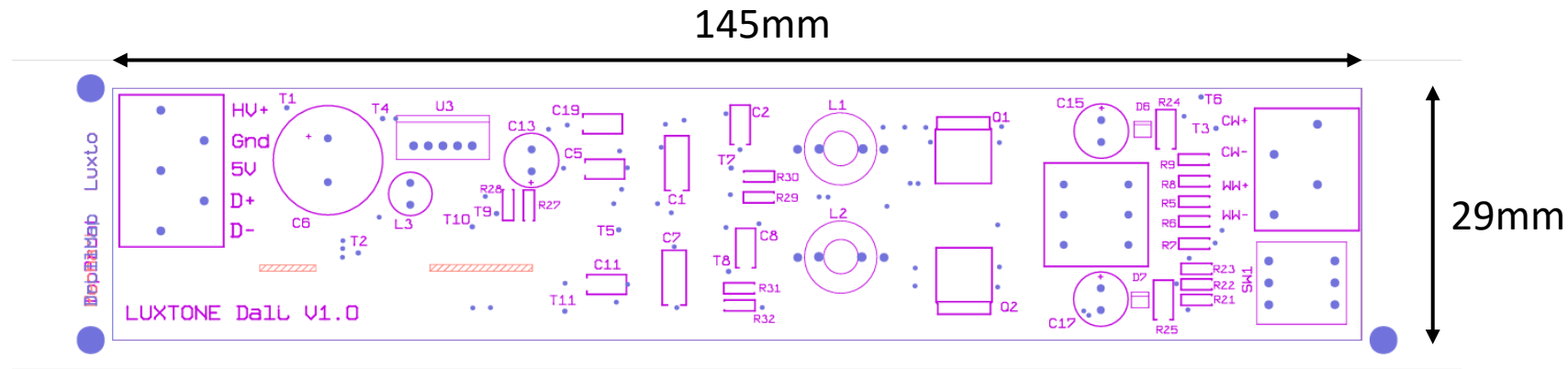
# DALI LED Driver EVAL + Development Board

	FEATURES	IEC 62386 Evaluation Board	IEC 62386 Development Board
1	DALI 2	✓	✓
2	Part No. 102,207 & 209(DT6, DT8-Tc)	✓	✓
3	Probit2Lab Test Report	✓	✓
4	Ready for DALI 2 Test Sequence software	✓	✓
5	Board Schematics	✗	✓
6	Bill of Materials	✗	✓
7	PCB Gerber	✗	✓
8	Development & Production Support	✗	✓

Note: SI No. 5,6,7 & 8 do not pertain to DALI Daughter card on the PCB.

DALI®, DALI-2®, and the DALI logo are registered trademarks of the DALI Alliance (Digital Illumination Interface Alliance). This presentation and the products shown herein are not affiliated with, endorsed by, or certified by the DALI Alliance unless explicitly stated. All references to DALI or DALI-2 are for descriptive purposes only to indicate compatibility or interoperability with the DALI standard.

# DALI LED Driver EVAL + Development Board



Test Points on PCB	
T1	HV
T2	GND
T3	GND
T4	PWM(WW)
T5	PWM(CW)
T6	Analog Volt
T7	GATE1
T8	GATE2
T9	MR
T10	ERC
T11	ERW

SW1	SW2	SW3	$I_{(ma)}$
1	1	1	1000
1	1	0	900
1	0	1	800
1	0	0	700
0	1	1	600
0	1	0	500
0	0	1	400
0	0	0	300

DALI®, DALI-2®, and the DALI logo are registered trademarks of the DALI Alliance (Digital Illumination Interface Alliance). This presentation and the products shown herein are not affiliated with, endorsed by, or certified by the DALI Alliance unless explicitly stated. All references to DALI or DALI-2 are for descriptive purposes only to indicate compatibility or interoperability with the DALI standard.

info@luxtone-global.com



+91 99673 67774

**luxtone**